

THE ASHLAND "C"



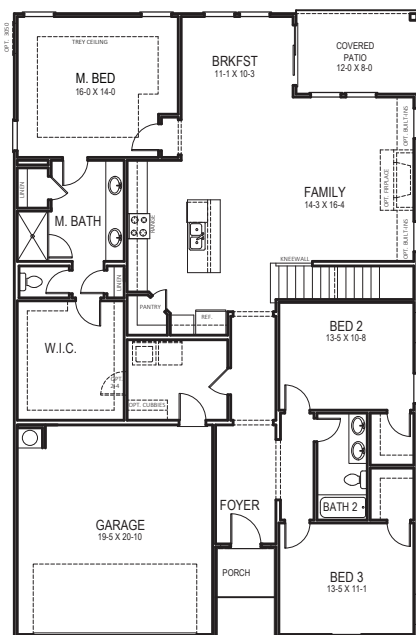
2,480 SF
base square feet

BEDROOMS: 4 • BATHS: 3 • 2 Story • 2 Car Garage

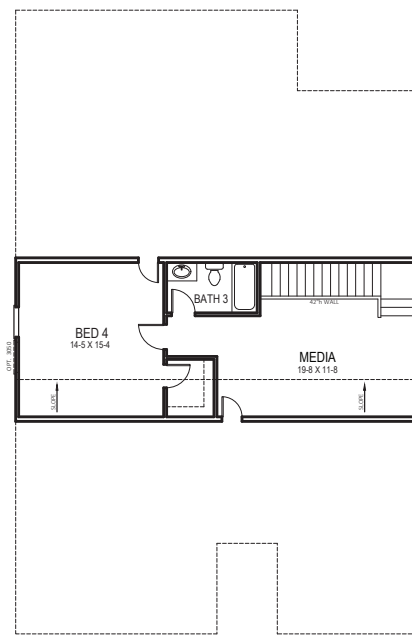
A perfect choice for those wanting a home that makes the best use of space. Offering features often seen in larger homes, such as an open family room, covered porch and a walk in pantry. With a great master suite and three other bedrooms, this is flexible family living at its best. Enjoy friends and family with the upstairs media room.

www.TrustNewHomes.com

FIRST FLOOR



SECOND FLOOR



**** SEVERAL OPTIONS AVAILABLE FOR THIS HOMEPLAN. PLEASE SEE SALES REPRESENTATIVE FOR DETAILS.****

MARKETING COLLATERAL REVISED: 07/05/20.

Pictures and other promotional materials are representative and may depict or contain options, upgrades, landscaping, and extra design features that are not included as part of the home and/or may not be available in all communities. Floor plans, elevations, options, home features, and community information are subject to change at any time without notice or obligation. Square footages and dimensions are approximate and may vary in construction and depending on the standard of measurement used, engineering and municipal or other site-specific conditions. All renderings and floor plans are an artist's conceptual drawings and may vary from the actual plans and homes as built, including, without limitation, window, door and other improvement locations and changes required by authority or to accommodate options or value engineering. Further, renderings may not be drawn to scale and homes may be constructed with a floor plan that is the reverse of the rendering. Plans are copyrighted and/or otherwise subject to Trust Homes and cannot be reproduced or copied without its prior written consent. Not an offer or solicitation to sell real property. Offers to sell real property may only be made and accepted at the sales center for individual Trust Homes community associate for details. 2016* Trust Homes Realty Group. All rights reserved.

TRUST
HOMES
You'll feel home with **U.S.**