

THE EVERGREEN "A"



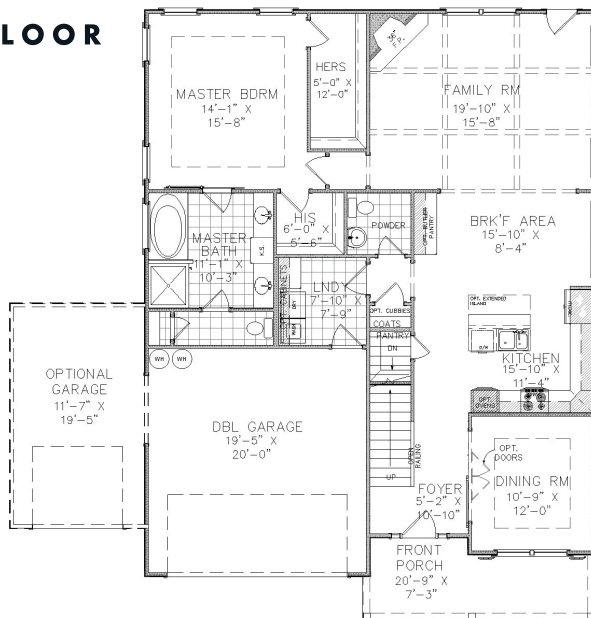
2832+ SF
base square feet

BEDROOMS: 4 • BATHS: 2-1/2 • 2 Story • 2 Car Garage

From kids' bicycles, to holiday decorations, to lawn equipment, enjoy enough room to put everything in its place with this home's optional 3-car garage. Inside, you're greeted with even more space on the open concept main level with the integrated kitchen/breakfast/family room. The first floor master bedroom features a tray ceiling, spacious bath and separate his-and-hers walk-in closet. Upstairs, the media room features 8-foot ceilings and an optional kitchenette to keep the drink cups and snack bowls full without a trip to the kitchen.

www.TrustNewHomes.com

FIRST FLOOR



SECOND FLOOR



**** SEVERAL OPTIONS AVAILABLE FOR THIS HOMEPLAN. PLEASE SEE SALES REPRESENTATIVE FOR DETAILS.****

MARKETING COLLATERAL REVISED: 08/29/18.

Pictures and other promotional materials are representative and may depict or contain options, upgrades, landscaping, and extra design features that are not included as part of the home and/or may not be available in all communities. Floor plans, elevations, options, home features, and community information are subject to change at any time without notice or obligation. Square footages and dimensions are approximate and may vary in construction and depending on the standard of measurement used, engineering and municipal for other site-specific conditions. All renderings and floor plans are an artist's conceptual drawings and may vary from the actual plans and homes as built, including, without limitation, window, door and other improvement locations and changes required by authority or to accommodate options or value engineering. Further, renderings may not be drawn to scale and homes may be constructed with a floor plan that is the reverse of the rendering. Plans are copyrighted and/or otherwise subject to Trust Homes and cannot be reproduced or copied without its prior written consent. Not an offer or solicitation to sell real property. Offers to sell real property may only be made and accepted at the sales center for individual Trust Homes community associate for details. 2016+ Trust Homes Realty Group. All rights reserved.

TRUST
HOMES
You'll feel home with **U.S.**